

TECHNICAL DATA SHEET

KOSOON®

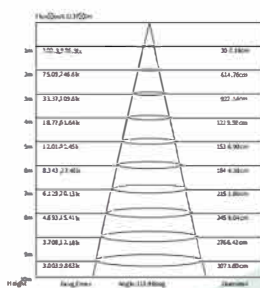
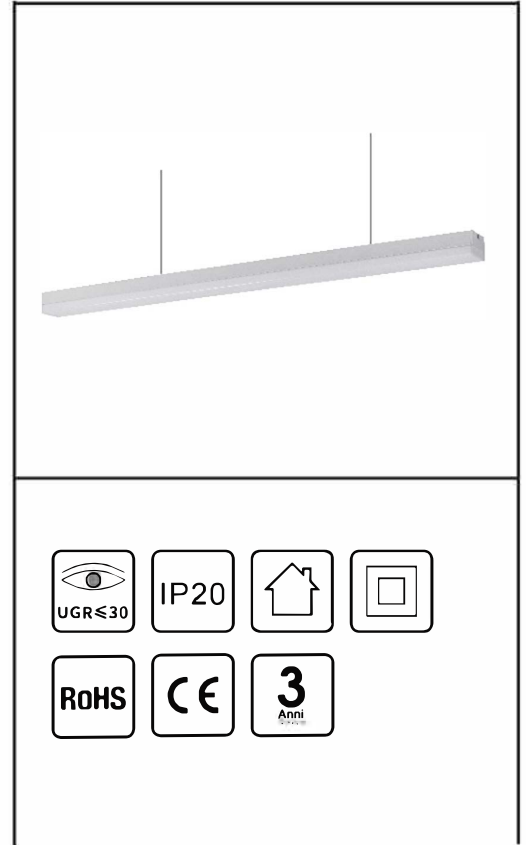
Features:

- Combination free of diverse graphics, independent light emission modules, uniform light emission.
- No strobe light to create a differentiated environment and lengthen the visual effect.
- High luminous efficiency, beautiful and fashionable, 3 years warranty.

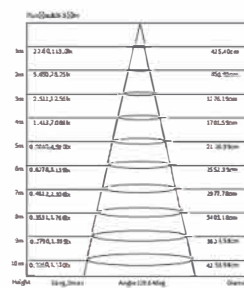
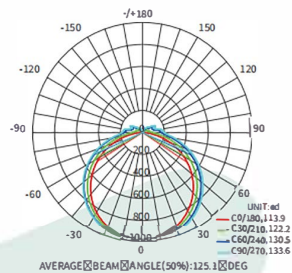
Modello: MLL003-A

Technical Parameters:

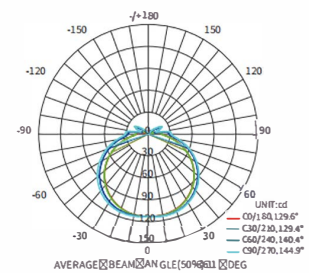
Model	MLL003-A
Power	40W/50W
PF	0.9
CRI	≥80
CCT	3000K / 4000K
Lumen	95lm/w 100lm/w 96lm/w 99lm/w
Dimensions	(40W) 3800lm / 3690lm 4013lm / 4000lm (50W) 4800lm / 4800lm 4960lm / 4960lm
	120° / 130°(Modulo)
UGR	≤30
Corner	L1200*W70*60mm/L1200*W100*60
Color	Black/white
Input Voltage	220V-240V
IP Protection	IP20
Warranty	3 years
Certification	CE, RoHS



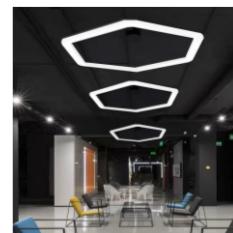
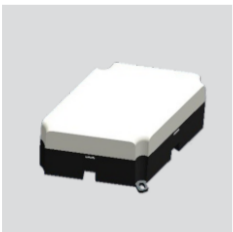
Linear light (120°)



Linking module (130°)



Modulo di collegamento



Gruppi di combinazione, stili vari

